

# Town of Eagle Zoning Map

WAUKESHA COUNTY, WISCONSIN

## LEGEND

- Civil Division Boundary
- Section Line
- Parcel Lines<sup>[1]</sup>
- Water
- Waukesha County Shoreland & Floodland Zoning<sup>[2]</sup>
- Historic District
- Historic Landmark
- Development Districts

[1] Parcel lines were derived from Waukesha County cadastral data current through June 30, 2016.  
 [2] In 2015, lands which are now located in Waukesha County's shoreland zoning jurisdiction were removed from the Town's zoning jurisdiction. For areas within the Waukesha County Shoreland and Floodland Ordinance jurisdiction, please also see the Waukesha County Shoreland and Floodland Protection Ordinance for additional zoning district standards.

## Town Zoning Districts

- AP Ag. Land Preservation
- RR Rural Residential<sup>[2]</sup>
- R-1 Residential
- B-1 Neighborhood Business
- B-2 Local Business
- B-4 Mixed Business
- M-1 Limited Industrial
- M-2 General Industrial
- UC Upland Conservancy<sup>[1]</sup>
- C-1 Conservancy<sup>[1]</sup>
- P-1 Public
- Q-1 Quarrying

[1] C-1 and UC district boundaries were derived from the 2014 FEMA Floodplain and current Waukesha County floodplain inventories, the 2010 DNR Wetland Inventory, and the 2010 SEWRPC Environmental Corridor Inventory.  
 [2] This district was previously referred to as A-3 Agricultural.

## Town Overlay Zoning Districts

- AP/UC Upland Conservancy Overlay<sup>[1]</sup>
- AP/C-1 Conservancy Overlay<sup>[2]</sup>
- HS Hydric Soils<sup>[3]</sup>
- WP Wellhead Protection<sup>[4]</sup>

[1] UC overlay district boundaries were derived from the 2010 SEWRPC Environmental Corridor Inventory.  
 [2] C-1 overlay district boundaries were derived from the 2014 FEMA Floodplain and current Waukesha County floodplain inventories, the 2010 DNR Wetland Inventory.  
 [3] The boundaries correspond to soils identified by the Natural Resources Conservation Service as being hydric and which are not otherwise included in the C-1 Conservancy District.  
 [4] The WPZ District extends 1,200 feet from the center of the corresponding well head.

## Historic Districts and Landmarks

Type	Description	Designating Ordinance	Tax Key(s)	S/T/R
District	Stute/Welch Farm; approximately 160 acres	1996-06	EGLT 1845.999	Sec. 30, T5N, R17E
District	Palestine School located at W351 S7510 STH 59; approximately 1.5 acres	1996-07	EGLT 1772.998	Sec. 11, T5N, R17E
Landmark	A.C. Clark/A.O. Smith Property located at W345 S10503 CTH E; approximately 0.6 acres	1996-08	EGLT 1870.032	Sec. 36, T5N, R17E
Landmark	Edward Hunkley House located at W364 S7310; approximately 5.0 acres	1996-09	EGLT 1765.998	Sec. 10, T5N, R17E

## Development Districts

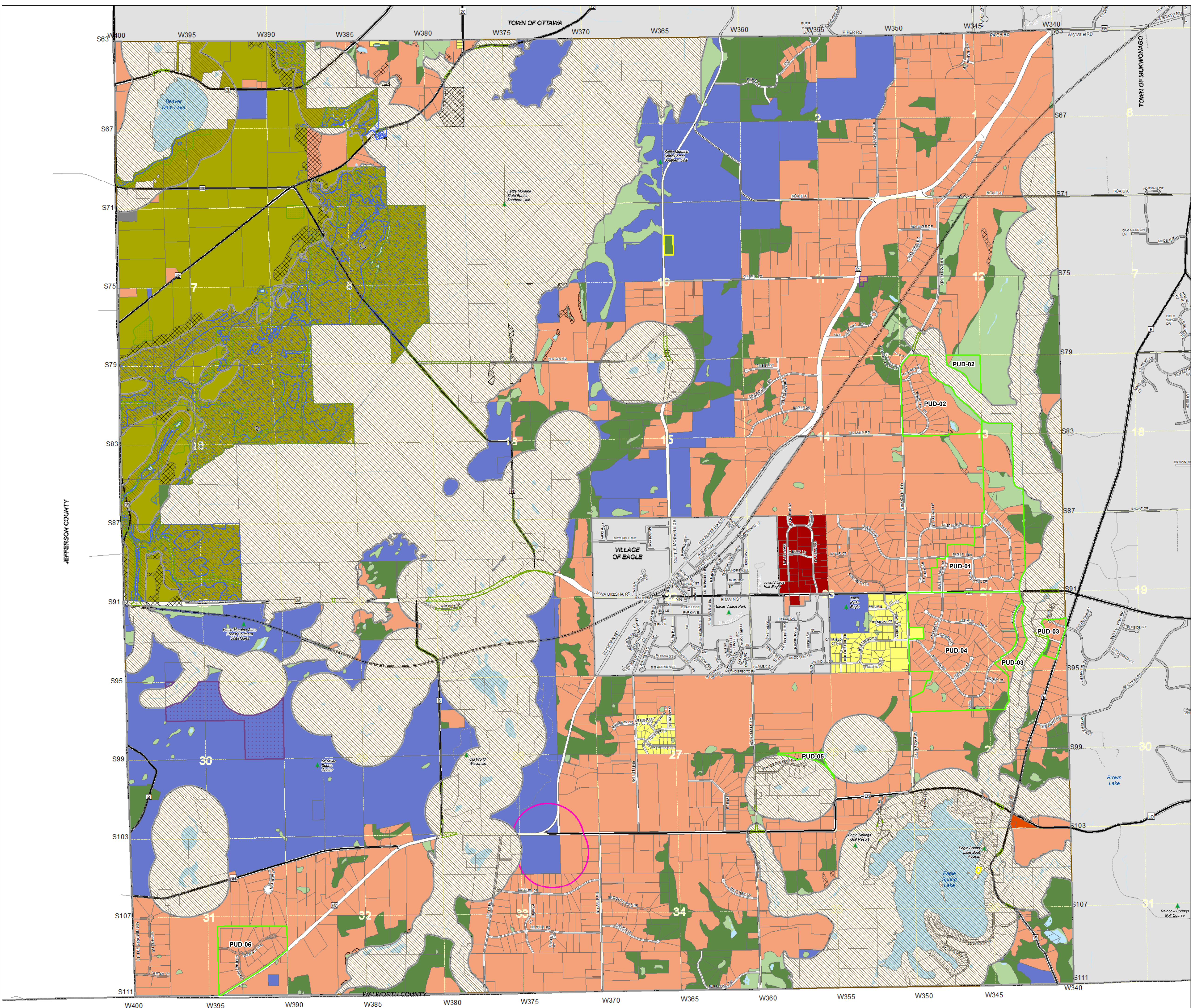
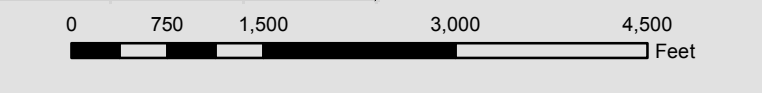
File ID	Description
PUD-01	Eagle's Aire subdivision
PUD-02	Eagle Aires North
PUD-03	Jericho Corners
PUD-04	Jericho Corners Addition No. 1
PUD-05	Eagles Preserve
PUD-06	Orchards Grove

## Recent Map Amendments

Town Ordinance Number	Date of Town Approval	Date of County Approval	Description
2014-03	11/3/2014	12/22/2014	Rezone portion of property from C-1 to R-1
2016-04	12/21/2016	3/28/2017	Zoning map revision in conjunction with repeal & recreation of zoning text

## Certification

Town Chair	Date
Town Clerk	Date



JEFFERSON COUNTY

WALWORTH COUNTY

TOWN OF MUKWONAGO

TOWN OF OTTAWA